

**RESOLUTION NO. 2008-194**

**A RESOLUTION OF THE CITY COUNCIL OF THE CITY OF ELK GROVE  
APPROVING THE SUBMITTAL OF A FUNCTIONAL CLASSIFICATION CHANGE  
REQUEST FOR LOCAL STREETS AND ROADS TO STATE OF CALIFORNIA  
DEPARTMENT OF TRANSPORTATION**

**WHEREAS**, the City of Elk Grove receives State and Federal road improvement and maintenance funding based on streets and roads designations; and

**WHEREAS**, incorporated cities are responsible for initiating requests for changes to the Functional Classification of streets and roads under their jurisdiction using approved Federal Highway Administration guidelines; and

**WHEREAS**, said Functional Classification changes, deletions, and additions, as presented in Attachment "A" and reflected in Attachment "B" are a part of the Functional Classification Change request submittal.

**NOW, THEREFORE, BE IT RESOLVED** that the City Council of the City of Elk Grove hereby approves the submittal of a Functional Classification Change Request for local streets and roads to the State of California Department of Transportation.

**PASSED AND ADOPTED** by the City Council of the City of Elk Grove this 27<sup>th</sup> day of August 2008.

  
\_\_\_\_\_  
GARY DAVIS, MAYOR of the  
CITY OF ELK GROVE

ATTEST:

  
\_\_\_\_\_  
SUSAN J. BLACKSTON, CITY CLERK

APPROVED AS TO FORM:

  
\_\_\_\_\_  
SUSAN COCHRAN, CITY ATTORNEY

## Functional Classification Changes Request Form -- ATTACHMENT "A"

CRS Map Sheet Number	Coordinate	CT District	County	Jurisdiction	Change/ New/ Delete	Road	From	To	(From) Class	(To) New Class	Length (mi)	Number of Through Lanes	Current AADT
7J51	G5	3	Sac	Elk Grove	Change	BILBY RD	UPRR CROSSING/ CITY LIMITS	BRUCEVILLE RD	8	6	1.842	2	3682
7J52	G2	3	Sac	Elk Grove	New	BRADSHAW RD	GRANT LINE RD	ELK GROVE BLVD	-	6	0.660	2	3414
7J52	G2	3	Sac	Elk Grove	New	BRADSHAW RD	ELK GROVE BLVD	BOND RD	-	6	1.001	2	5381
7J42	G10	3	Sac	Elk Grove	New	BRADSHAW RD	BOND RD	SHELDON RD	-	6	1.004	2	9026
7J42	G9	3	Sac	Elk Grove	New	BRADSHAW RD	SHELDON RD	CALVINE RD	-	6	1.003	2	8017
7J51	J4	3	Sac	Elk Grove	Change	BRUCEVILLE RD	BILBY RD	ELK GROVE BLVD	8	6	2.029	2	18031
7J51	F3	3	Sac	Elk Grove	Change	FRANKLIN BLVD	RR XING	ELK GROVE BLVD	7	6	1.172	2	10657
7J42	B9	3	Sac	Elk Grove	Edit	GRANT LINE RD	MOONEY RD	CALVINE RD	-	6	1.590	2	14050
7J51	J6	3	Sac	Elk Grove	New	KAMMERER RD	BRUCEVILLE RD	W. STOCKTON BLVD	-	6	3.178	1	2004
7J51	G4	3	Sac	Elk Grove	New	WHITELOCK PKWY	BRUCEVILLE RD	BELLATERRA RD (E)	-	6	0.250	4	8121
7J51	G3	3	Sac	Elk Grove	New	WHITELOCK PKWY	BELLATERRA RD (E)	BLOSSOM RIDGE DR	-	6	1.242	2	10855
7J51	G3	3	Sac	Elk Grove	New	WHITELOCK PKWY	BLOSSOM RIDGE DR	FRANKLIN BLVD	-	6	0.380	4	10855
7J51	G2	3	Sac	Elk Grove	New	ALLESSANDRIA DR	HARVEST PARK DR	BELLATERRA DR	-	7	0.229	2	4000
7J52	G3	3	Sac	Elk Grove	New	APPLE MILL DR	BLACK SWAN DR	ELK GROVE BLVD	-	7	0.338	2	2500
7J51	G3	3	Sac	Elk Grove	New	BELLATERRA DR	WHITELOCK PKWY	WHITELOCK PKWY	-	7	1.608	2	2211
7J51	F3	3	Sac	Elk Grove	New	BLOSSOM RANCH DR	BLOSSOM RIDGE DR	FIRE POPPY DR	-	7	0.678	2	700
7J51	F3	3	Sac	Elk Grove	New	BLOSSOM RIDGE DR	FRANKLIN BLVD	WILLARD PKWY	-	7	1.205	2	1351
7J51	E1	3	Sac	Elk Grove	New	BOA NOVA DR	BILBY RD	BRUCEVILLE RD	-	7	0.521	2	1000
7J52	G3	3	Sac	Elk Grove	New	BOVILL DR	MAINLINE DR	APPLE MILL DR	-	7	0.575	2	2000
7J51	G4	3	Sac	Elk Grove	New	COOP DR	FRANKLIN HIGH RD	BILBY RD	-	7	0.754	2	1200
7J51	G2	3	Sac	Elk Grove	New	CRESLEIGH PKWY	ELK GROVE BLVD	HARVEST PARK DR (S)	-	7	0.480	2	4810
7J52	F1	3	Sac	Elk Grove	New	CRISWELL DR	STONEBROOK DR	BRADSHAW RD	-	7	0.520	2	1185
7J52	F2	3	Sac	Elk Grove	New	E. PARK DR	SIERRA RIVER DR	ELK GROVE BLVD	-	7	0.303	2	2000
7J51	D2	3	Sac	Elk Grove	New	E. TARON DR	BOBBELL DR	ELK GROVE BLVD	-	7	0.983	2	4000
7J51	G3	3	Sac	Elk Grove	New	FIRE POPPY DR	BELLATERRA DR	ELK GROVE BLVD	-	7	0.747	2	5447
7J51	H4	3	Sac	Elk Grove	New	FRANKLIN HIGH RD	WHITELOCK PKWY	WHITELOCK PKWY	-	7	1.983	2	10657
7J51	F5	3	Sac	Elk Grove	New	GILLIAM DR	MCLEAN DR	BILBY RD	-	7	0.690	2	1200
7J51	J4	3	Sac	Elk Grove	New	HARVEST PARK DR	CRESLEIGH PKWY	CRESLEIGH PKWY	-	7	0.618	2	800
7J52	G2	3	Sac	Elk Grove	New	MACHADO RANCH DR	FRANKLIN HIGH RD	BRUCEVILLE RD	-	7	0.250	2	2500
7J51	D2	3	Sac	Elk Grove	New	MAINLINE DR	WATERMAN RD	ELK GROVE BLVD	-	7	1.024	2	3500
7J51	E2	3	Sac	Elk Grove	New	MCLEAN DR	BLOSSOM RIDGE DR	FRANKLIN HIGH RD	-	7	0.619	2	1300
7J51	J3	3	Sac	Elk Grove	New	PERCHERON DR	FRANKLIN BLVD	BLOSSOM RIDGE DR	-	7	0.544	2	3000

Functional Classification Codes	
<b>Rural Functional Class Codes:</b>	<b>Urban Functional Class Codes:</b>
01= Principal Arterial Interstate	11=Principal Arterial Interstate
02=Other Principal Arterial	12=Principal Arterial -Other Fwys or Expwys
06=Minor Arterial	14=Other Principal Arterial
07=Major Collector	16=Minor Arterial
08=Minor Collector	17=Collector
09=Local	19=Local

CRS Map Sheet Number	Coordinate	CT District	County	Jurisdiction	Change/ New/ Delete	Road	From	To	(From) Class	(To) New Class	Length (mi)	Number of Through Lanes	Current AADT
7J52	F2	3	Sac	Elk Grove	New	POPPY RIDGE RD	W. STOCKTON BLVD	BRUCEVILLE RD	-	7	2.286	2	279
7J42	G10	3	Sac	Elk Grove	New	RIDGEROCK DR	MAINLINE DR	BRADSHAW RD	-	7	0.280	2	500
7J42	F10	3	Sac	Elk Grove	New	SALMON CREEK DR	STONE SPRINGS DR	BOND RD	-	7	0.366	2	600
7J51	H4	3	Sac	Elk Grove	New	SIERRA RIVER DR	E. PARK	BOND RD	-	7	0.827	2	800
7J42	F10	3	Sac	Elk Grove	New	STATHOS DR	BILBY RD	BOA NOVA DR	-	7	1.033	2	1500
7J52	F1	3	Sac	Elk Grove	New	STONE SPRINGS DR	SIERRA RIVER DR	SALMON CREEK DR	-	7	0.570	2	750
7J51	H3	3	Sac	Elk Grove	New	STONEBROOK DR	BOND RD	E. PARK DR	-	7	0.793	2	5500
7J51	D2	3	Sac	Elk Grove	New	TERRAZZO DR	BELLATERRA DR	BRUCEVILLE RD	-	7	0.264	2	3000
7J51	C2	3	Sac	Elk Grove	New	W. TARON DR	ELK GROVE BLVD	BOBELL DR	-	7	0.983	2	7500
7J43	A7	3	Sac	Elk Grove	New	WILLARD PARKWAY	BILBY RD	WHITELOCK PKWY	-	7	1.099	4	10000
7J41	H10	3	Sac	Elk Grove	New	EXCELSIOR	SHELDON RD	CALVINE RD	-	8	1.009	2	3099
7J42	B6	3	Sac	Elk Grove	New	BRUCEVILLE RD	LAGUNA BLVD	ELK GROVE BLVD	-	14	0.983	3	21712
7J51	G1	3	Sac	Elk Grove	Edit	CALVINE RD	CLIFFCREST DR/CITY LIMITS	ELK GROVE-FLORIN RD	-	14	1.206	4	41613
7J51	F1	3	Sac	Elk Grove	Edit	ELK GROVE BLVD	FRANKLIN BLVD	I-5	-	14	2.229	2	18453
7J41	E9	3	Sac	Elk Grove	Edit	FRANKLIN BLVD	ELK GROVE BLVD	LAGUNA BLVD	-	14	1.009	6	20616
7J41	J9	3	Sac	Elk Grove	Edit	FRANKLIN BLVD	LAGUNA BLVD	CL 0.03M S.FRANCESCA	-	14	1.276	4	21182
7J41	J9	3	Sac	Elk Grove	Edit	LAGUNA BLVD	FRANKLIN BLVD	I-5	-	14	1.990	2	25510
7J41	E9	3	Sac	Elk Grove	Edit	LAGUNA BLVD	BIG HORN BLVD	SHWY 99	-	14	0.489	8	49868
7J41	A7	3	Sac	Elk Grove	Edit	LAGUNA BLVD	FRANKLIN BLVD	BIG HORN BLVD	-	14	2.283	6	36499
7J41	H10	3	Sac	Elk Grove	Edit/Change	POWER INN RD	GENEVA POINTE DR	SHELDON RD	19	14	1.072	4	4060
7J41	D9	3	Sac	Elk Grove	New	BRUCEVILLE RD	SHELDON RD	LAGUNA BLVD	-	16	0.955	2	31661
7J41	D9	3	Sac	Elk Grove	Edit	DWIGHT RD	CL .34M E/ LAGUNA STATION	FRANKLIN BLVD	-	16	0.610	2	900
7J41	K10	3	Sac	Elk Grove	Edit/Change	DWIGHT RD	LAGUNA BLVD	CITY LIMITS	19	16	0.472	2	900
7J42	B8	3	Sac	Elk Grove	New	ANCESTOR DR	BIG HORN BLVD	GENERATIONS DR	-	17	0.180	2	1500
7J42	D7	3	Sac	Elk Grove	New	BLUE MAIDEN WY	SHASTA LILY DR	POWER INN RD	-	17	0.319	2	3000
7J42	E10	3	Sac	Elk Grove	New	BROWN RD	ELK GROVE FLORIN RD	WATERMAN RD	-	17	1.000	2	1100
7J52	C2	3	Sac	Elk Grove	New	CROWELL DR	BOND RD	BOND RD	-	17	1.089	2	1000
7J52	D2	3	Sac	Elk Grove	New	EMERALD OAK DR	VALLEY OAK LN	ELK GROVE BLVD	-	17	0.510	2	1500
7J42	D7	3	Sac	Elk Grove	New	EMERALD PARK DR	GROUSE MEADOW DR	ELK GROVE FLORIN RD	-	17	0.720	2	1100
7J42	B8	3	Sac	Elk Grove	New	FOUR SEASONS DR	EIK GROVE-FLORIN RD	BROWN RD	-	17	0.670	2	662
7J41	J10	3	Sac	Elk Grove	New	FRESIA DR	SHELDON RD	SHASTA LILY DR	-	17	0.306	2	1500
7J41	B10	3	Sac	Elk Grove	New	GENERATIONS DR	BIG HORN BLVD	DESCENDANT DR	-	17	0.582	2	1000
7J41	k8	3	Sac	Elk Grove	New	HARBOUR POINT DR	LAGUNA BLVD	ELK GROVE BLVD	-	17	1.420	2	13081
7J41	G10	3	Sac	Elk Grove	New	HERITAGE HILL DR	EIK GROVE-FLORIN RD	CALVINE RD	-	17	1.038	2	2173
7J52	B1	3	Sac	Elk Grove	Edit	LAGUNA PARK DR	FRANKLIN BLVD	LAGUNA BLVD	-	17	1.120	2	1784

Functional Classification Codes	
<b>Rural Functional Class Codes:</b>	<b>Urban Functional Class Codes:</b>
01= Principal Arterial Interstate	11=Principal Arterial Interstate
02=Other Principal Arterial	12=Principal Arterial -Other Fwys or Expwys
06=Minor Arterial	14=Other Principal Arterial
07=Major Collector	16=Minor Arterial
08=Minor Collector	17=Collector
09=Local	19=Local

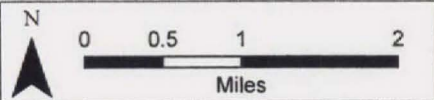
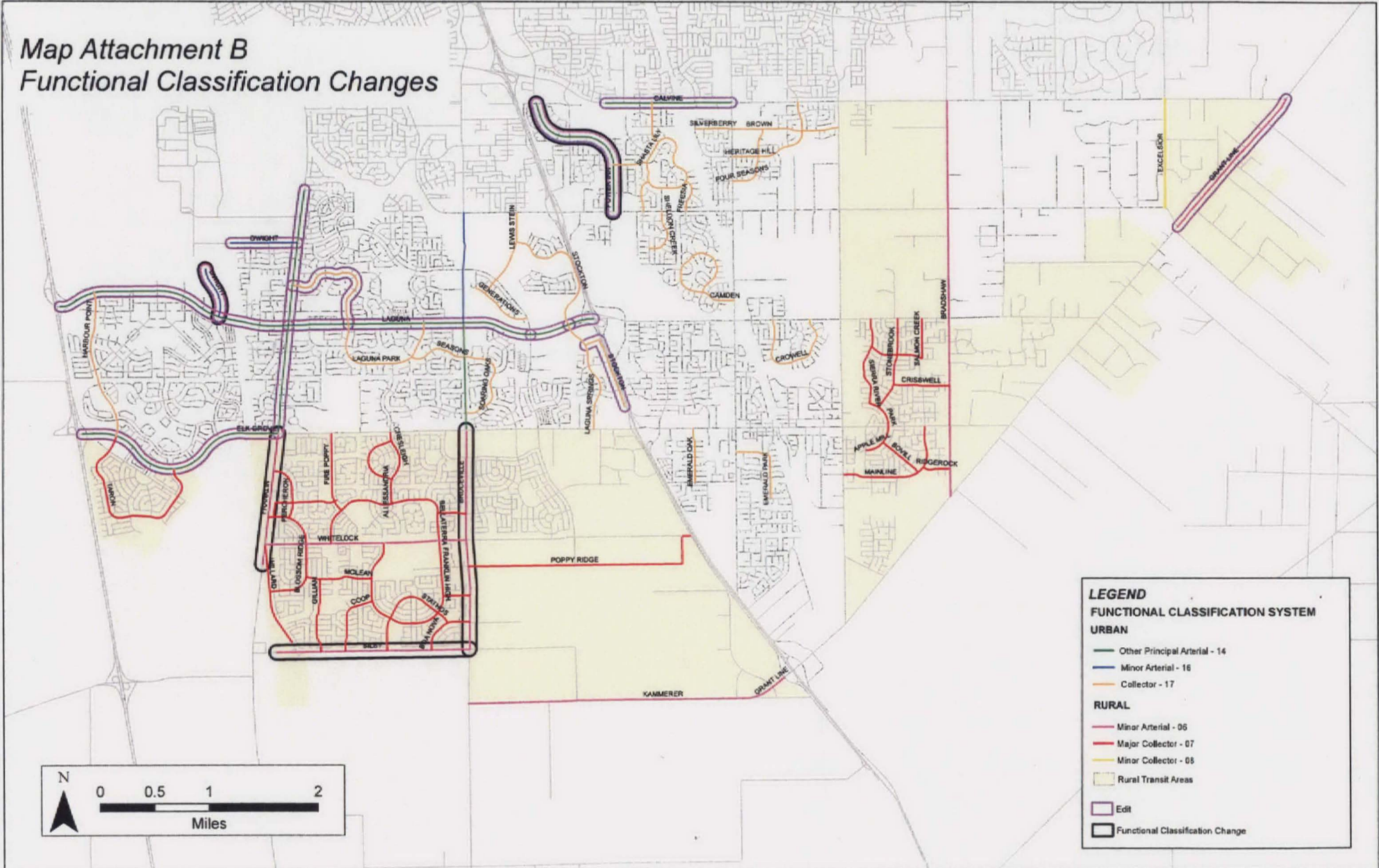
CRS Map Sheet Number	Coordinate	CT District	County	Jurisdiction	Change/ New/ Delete	Road	From	To	(From) Class	(To) New Class	Length (mi)	Number of Through Lanes	Current AADT
7J41	K8	3	Sac	Elk Grove	New	LAGUNA PARK DR	LAGUNA BLVD	LAGUNA BLVD	-	17	1.238	2	1856
7J41	K8	3	Sac	Elk Grove	New	LAGUNA SPRINGS DR	ELK GROVE BLVD	LAGUNA BLVD	-	17	1.072	2	7053
7J42	C9	3	Sac	Elk Grove	New	LEWIS STEIN RD	SHELDON RD	W. STOCKTON BLVD	-	17	0.265	4	6000
7J41	K6	3	Sac	Elk Grove	New	LEWIS STEIN RD	W. STOCKTON BLVD	BIG HORN BLVD	-	17	0.396	2	3000
7J41	J10	3	Sac	Elk Grove	New	N. CAMDEN DR	SPRINGHURST DR	CAMDEN LAKE WAY	-	17	0.451	2	2000
7J42	B8	3	Sac	Elk Grove	Delete	OLD CALVINE RD	STOCKTON BLVD	POWER INN RD	-	17		2	
7J42	B8	3	Sac	Elk Grove	New	SEASONS DR.	BRUCEVILLE RD	LAGUNA PARK DR	-	17	0.527	2	1600
7J42	B8	3	Sac	Elk Grove	New	SHASTA LILY DR	SUMMER POINTE DR	SOUTH END	-	17	0.026	2	2300
7J42	B8	3	Sac	Elk Grove	New	SHASTA LILY DR	FREESIA DR	SOUTH END	-	17	0.273	2	1500
7J42	B7	3	Sac	Elk Grove	New	SHASTA LILY DR	FREESIA DR	NORTH END	-	17	0.165	2	1400
7J42	C7	3	Sac	Elk Grove	New	SHELDON CREEK DR	SHELDON RD	BECKINGTON DR	-	17	0.459	2	2180
7J51	J1	3	Sac	Elk Grove	New	SHELDON NORTH DR	CALVINE RD	SHASTA LILY DR	-	17	0.374	2	5500
7J42	B8	3	Sac	Elk Grove	New	SILVERBERRY AVE	BLACK KITE DR	ELK GROVE FLORIN RD	-	17	0.340	2	1500
7J42	C9	3	Sac	Elk Grove	New	SOARING OAKS DR	BRUCEVILLE RD (S)	BRUCEVILLE RD (N)	-	17	0.902	2	1600
7J42	A10	3	Sac	Elk Grove	New	SUMMER POINTE DR	SHELDON RD	SHASTA LILY DR	-	17	0.299	2	2000
7J52	B1	3	Sac	Elk Grove	New	W. CAMDEN DR	SPRINGHURST DR	ELK GROVE FLORIN RD	-	17	0.966	2	5100
7J42	A10	3	Sac	Elk Grove	New	W. STOCKTON BLVD	LAGUNA BLVD	LEWIS STEIN RD	-	17	1.272	2	2377
7J52	B1	3	Sac	Elk Grove	Edit	W. STOCKTON BLVD	RED FOX WAY	LAGUNA SPRINGS DR	-	17	0.633	2	2000
											72.257		
											365.910		

Functional Classification Codes	
<b>Rural Functional Class Codes:</b>	<b>Urban Functional Class Codes:</b>
01= Principal Arterial Interstate	11=Principal Arterial Interstate
02=Other Principal Arterial	12=Principal Arterial -Other Fwys or Expwys
06=Minor Arterial	14=Other Principal Arterial
07=Major Collector	16=Minor Arterial
08=Minor Collector	17=Collector
09=Local	19=Local

<b>CRS Map Sheet Number</b>	<b>California Road System Map Number</b> The five digit alphanumeric code that appears in the lower right-hand corner of the CRS map
<b>Coordinate</b>	<b>The coordinate derived from the grid system on the CRS map.</b> These are found along the edges of the map. This is a two or three digit entry with the first digit an alpha character (A-K) from the horizontal axis and the second digit (or second and third digits if 10) a numeric character (1-10) from the vertical axis.
<b>CT District</b>	<b>The Caltrans District</b>
<b>County</b>	<b>County Abbreviation:</b> Ala, Alp, Ama, But, Cal, Col, CC, DN, ED, Fre, Gle, Hum, Imp, Iny, Ker, Kin, Lak, Las, LA, Mad, Mrn, Mpa, Men, Mer, Mod, Mno, Mon, Nap, Nev, Ora, Pla, Plu, Riv, Sac, SBT, SBd, SD, SF, SJ, SLO, SM, SB, SCl, SCr, Sha, Sie, Sis, Sol, Son, Sta, Sut, Teh, Tri, Tul, Tuo, Ven, Yol, Yub
<b>Jurisdiction</b>	<b>The full City or County name that has jurisdiction. (Upper &amp; lower case).</b>
<b>Change</b>	Enter "Change" to change the functional classification or the limits of an existing roadway segment.
<b>New</b>	Enter "New" to add a new roadway segment.
<b>Delete</b>	Enter "Delete" to delete an existing roadway segment.
<b>Road</b>	The street name
<b>From</b>	The beginning point of the record
<b>To</b>	The ending point of the record
<b>(From) Class</b>	<b>The existing Functional Classification Code.</b> The valid codes are as listed on the bottom of the form.
<b>(To) New Class</b>	<b>The desired Functional Classification Code.</b> The valid codes are as listed on the bottom of the form.
<b>Length (mi)</b>	<b>Section Length</b> Record to the <b>nearest .001 mile</b> if possible, or as close as is known.
<b>Number of Through Lanes</b>	<b>The total number of through lanes in both directions</b> Don't count turn lanes, auxillary lanes or parking lanes
<b>Current AADT</b>	<b>The current Annual Average Daily Traffic (AADT).</b> A traffic count is not needed for this exercise, just put in the latest figure available. This information gives credence to the justification for a change in functional classification.

# Map Attachment B

## Functional Classification Changes



**LEGEND**

**FUNCTIONAL CLASSIFICATION SYSTEM**

**URBAN**

- Other Principal Arterial - 14
- Minor Arterial - 16
- Collector - 17

**RURAL**

- Minor Arterial - 06
- Major Collector - 07
- Minor Collector - 08
- Rural Transit Areas

□ Edit

▭ Functional Classification Change

**CERTIFICATION**  
**ELK GROVE CITY COUNCIL RESOLUTION NO. 2008-194**

**STATE OF CALIFORNIA            )**  
**COUNTY OF SACRAMENTO        )     ss**  
**CITY OF ELK GROVE             )**


***I, Susan J. Blackston, City Clerk of the City of Elk Grove, California, do hereby certify that the foregoing resolution was duly introduced, approved, and adopted by the City Council of the City of Elk Grove at a regular meeting of said Council held on August 27, 2008 by the following vote:***

**AYES :            COUNCILMEMBERS:     *Davis, Hume, Scherman, Cooper, Leary***

**NOES:            COUNCILMEMBERS:     None**

**ABSTAIN :       COUNCILMEMBERS:     None**

**ABSENT:         COUNCILMEMBERS:     None**

  
\_\_\_\_\_  
**Susan J. Blackston, City Clerk**  
**City of Elk Grove, California**